

APPROVED

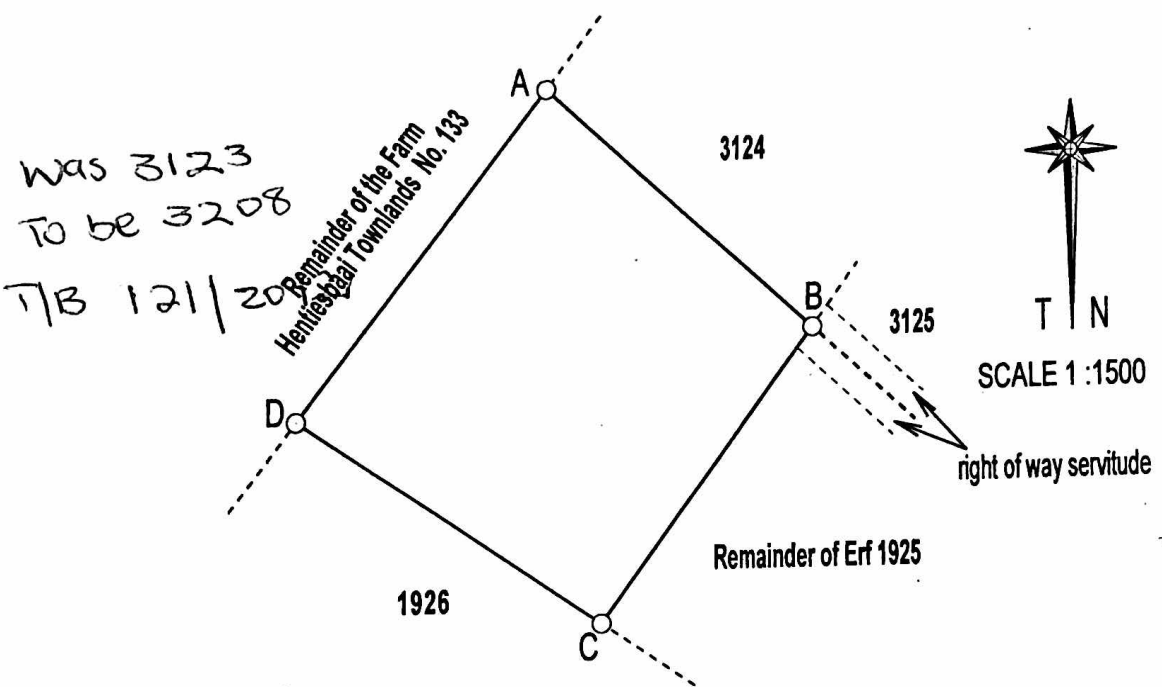
*[Signature]*

No. A 560/2013

2013 -12- 1 9

for SURVEYOR-GENERAL

SIDES metres	ANGLES OF DIRECTION	CO-ORDINATES		Designation		
		Y	X			
	Constants					
A B	70.78	313.06.40	A	+ 73 680.16	+ 12 134.90	JH6
B C	69.56	36.15.30	B	+ 73 628.49	+ 12 183.27	JH7
C D	72.22	124.12.10	C	+ 73 669.63	+ 12 239.36	JH5
D A	80.62	217.36.10	D	+ 73 729.36	+ 12 198.77	1926a
			△	+ 64 554.54	+ 9 110.21	Henty
			⊕	+ 73 544.65	+ 12 604.78	RM1923



Description of beacons :

- A ----- 16mm round iron peg
- B-D ----- 16mm iron peg

The figure A B C D

<sup>3208</sup> represents 5350 square metres of land being  
**ERF 3123 (a Portion of Erf 1925) Hentiesbaai Extention 8**

Situate in the Municipality of Hentiesbaai  
 Registration Division G, Erongo Region, Namibia

Surveyed in May 2013 by me

*[Signature]*  
 J. Hangua  
 Land Surveyor

This diagram is annexed to No. d.d Registrar of deeds	The original diagram is A559/2013 Transfer/Grant	S.R. No.: 181/2013 Gen. Plan No.: Noting Plan: MD-1BC/Y2 File No.: Hen.A/8
---	--	---